



# Apply by November 30<sup>th</sup> 2016

## Greater Spokane River Watershed Regional Conservation Partnership Program (RCPP)



### Elements and Incentives

RCPP is a partner-driven, locally led approach to enhancing conservation efforts in the Spokane River Watershed (see map on reverse side). NRCS awarded \$7.7 million from the RCPP program to the Spokane Conservation District (SCD) and partners to help producers and private forest landowners enhance conservation efforts across nearly 4 million acres in Washington and Idaho.

RCPP focuses on NRCS Farm Bill programs and initiates some new programs from the Pacific NW Direct Seed Association and the SCD to assist in the delivery of conservation practices. See reverse side for additional information about these programs:

- ✓ Environmental Quality Incentive Program (EQIP)
- ✓ Conservation Stewardship Program (CSP)
- ✓ Commodity Buffer Program
- ✓ Healthy Forest Reserve Program (HFRP)
- ✓ Farmed Smart Certification Program
- ✓ Agriculture Conservation Easement Program (ACEP)

### Farmed Smart Certification

- Recognizes and honors producers for the economic & environmental sustainability of their operation.
- Provides regulatory certainty or “safe harbor” for producers
- Possible Future Benefits
  - Provides market premium
  - Tax credits for equipment
  - Higher ranking on NRCS programs
  - Reduced rate on equipment loans



### Contact Information

- Charlie Peterson  
Spokane RCPP Manager  
[charlie-peterson@sccd.org](mailto:charlie-peterson@sccd.org)  
(509) 535- 7274 ext 220
- Seth Flanders  
Spokane RCPP Riparian Coordinator  
[seth-flanders@sccd.org](mailto:seth-flanders@sccd.org)  
(509) 535 -7274 ext 223

Apply now and more information at [www.SCCD.org/rcpp](http://www.SCCD.org/rcpp)

## RCPP staff will help enroll landowners in these available programs:

### Environmental Quality Incentive Program (EQIP)

- **Eligibility:** Agricultural producers and owners of non-industrial private forestland and Tribes (must control or own eligible land)
- Eligible land includes cropland, rangeland, pastureland, non-industrial private forestland and other farm or ranch lands
- Funding for a wide range of practices that promote stewardship and sustainability of natural resources (livestock, direct seed, mulch till, forestry improvements, etc.)
- Must develop a conservation plan
- Contracts can last up to five years

### Commodity Buffer Program (Currently only available in Washington)

- **Eligibility:** Agricultural producers and other farm or ranch lands and Tribes (must control or own eligible land)
- SCD incentive program can turn your most productive land per acre into the most profitable
- Compensation rates to install buffers at or above adjacent crop rotation values (based on RMA projected prices)
- Protects waterways from nutrients and sediment
- Buffers can be either grass only (filter strip) or contain grass, trees and shrubs (riparian buffer)
- Funding incentives available based on size of buffer, tilling practices, and type of buffer
- Continuous sign-up available

### Conservation Stewardship Program (CSP)

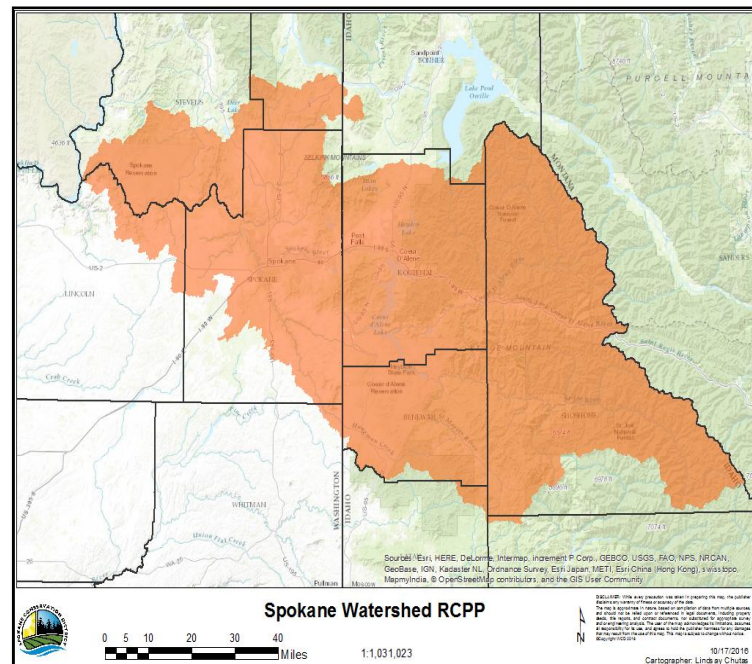
- **Eligibility:** Agricultural producers and owners of non-industrial private forestland and Tribes (must control or own eligible land). Must be meeting the stewardship threshold for at least two resource concerns at time of application
- Program focuses on those who are ready to take conservation to the next level
- Helps build your business while implementing conservation practices that help ensure sustainability of your entire operation
- Payments based on continuing existing conservation efforts and the implementation of additional conservation activities

### Healthy Forest Reserve Program (HFRP)

- **Eligibility:** Must provide proof of land ownership or an operator (tenant) must provide written concurrence from the landowner of tenancy for the period of the HFRP restoration agreement.
- Land must be privately owned or owned by Indian tribes
- Restore, enhance, and protect forestland through easement and financial assistance

### Agriculture Conservation Easement Program (ACEP)

- **Eligibility:** Cropland, rangeland, grassland, pastureland, and non-industrial private forestland (Tribes too).
- Long-term conservation easement purchase of agricultural land prevents conversion of productive working land to non ag uses
- Restoration, protection, and enhancement of wetland areas through purchase of wetland reserve easement



**Apply now! Check your geographic eligibility and complete your no-obligation pre-app online at [www.SCCD.org/rcpp](http://www.SCCD.org/rcpp)**